

DOZUKI

# How to Embed Media on Wiki Pages

embed media on wiki pages

Written By: Dozuki System



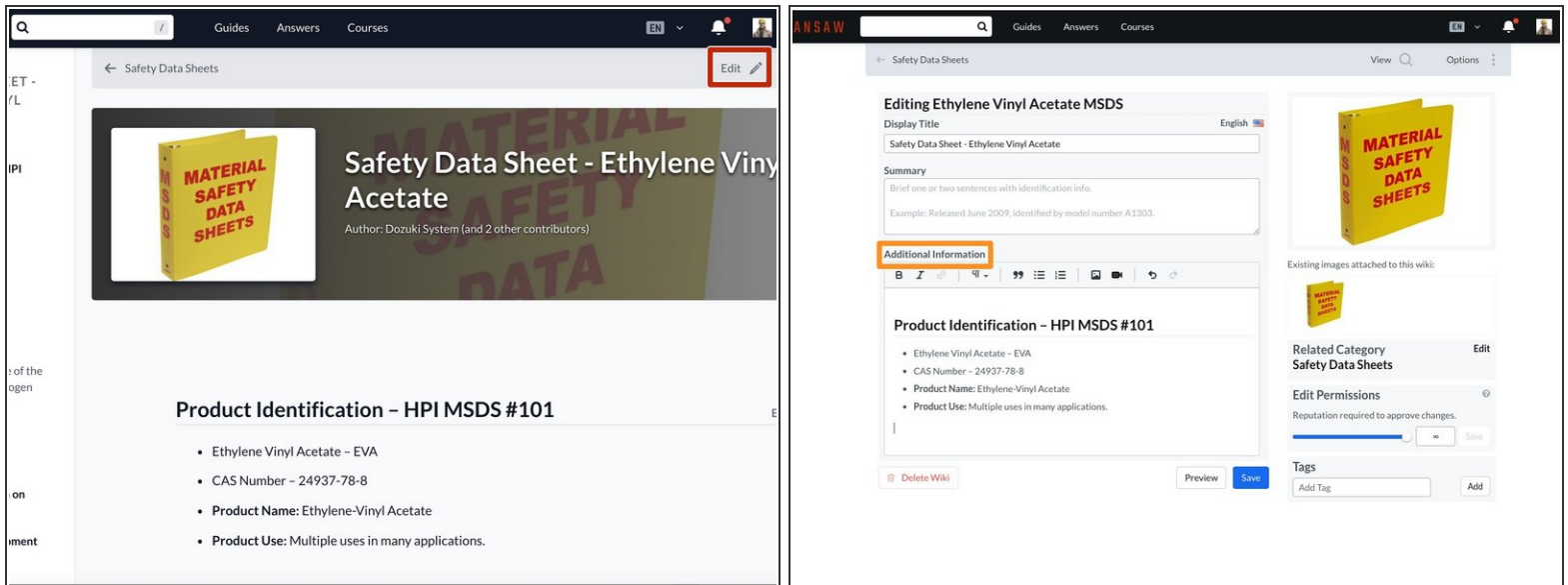
## INTRODUCTION

This guide demonstrates how to embed different media on wiki pages. You can embed videos, Google Documents, Google Sheets, Google Slides, LucidChart files, and Gists.

## Options

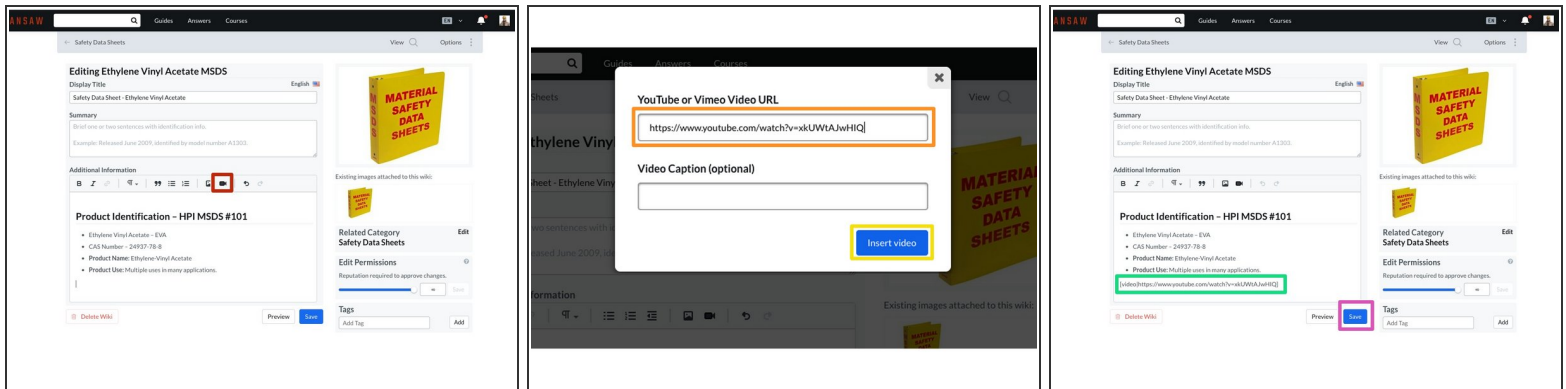
- [Video](#)
- [Google Sheet](#)
- [Google Document](#)
- [Google Slides](#)
- [LucidChart](#)
- [Gists](#)

## Step 1 — Edit Wiki Page



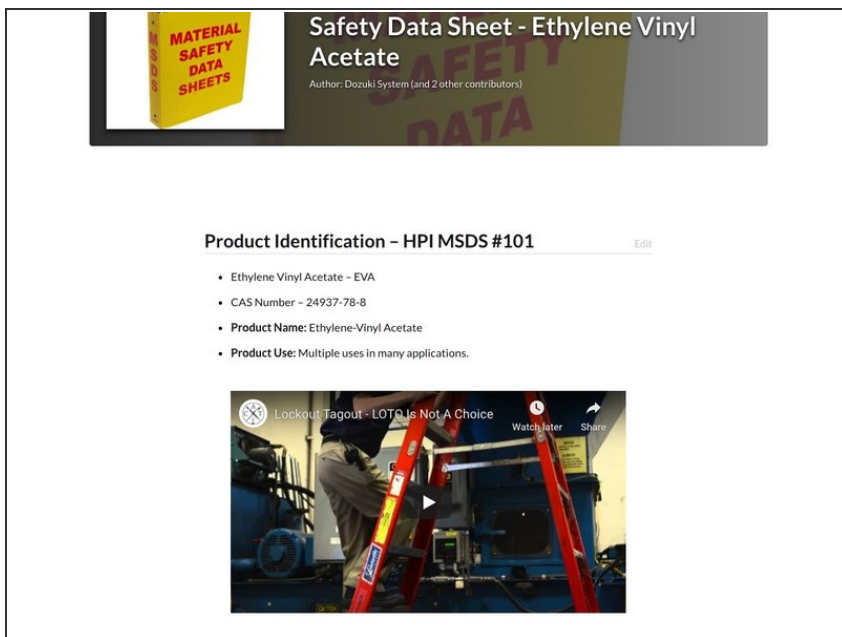
- Navigate to the page you are editing and click on the **Edit** button in the top-right corner, just beneath the site header.
- Place your cursor in the **Additional Information** text field, where you want to insert your embed file.

## Step 2 — Add a Video Embed



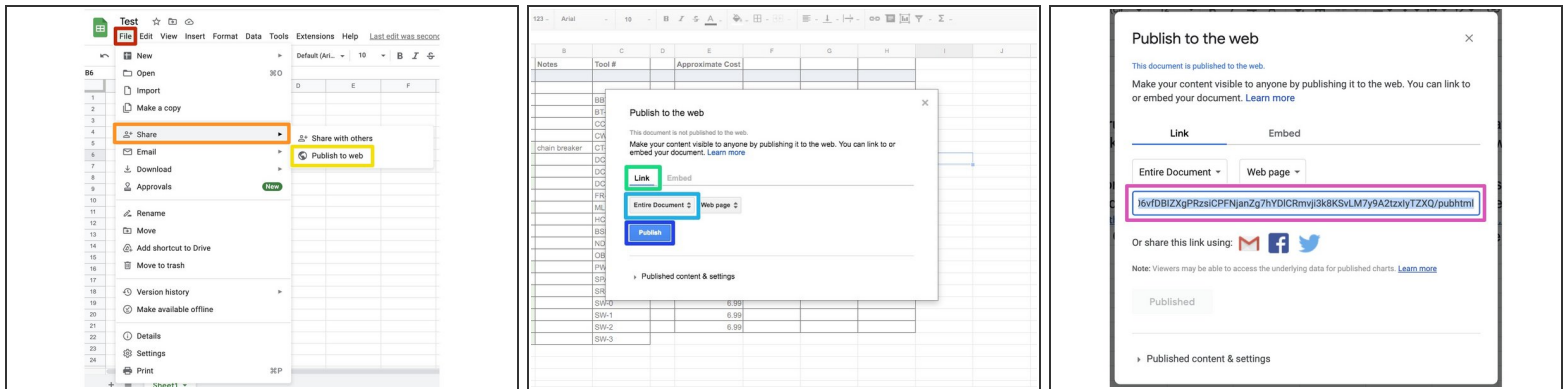
- Click on the **Video** icon in the toolbar, above the **Additional Information** text field.
- In the field provided in the prompt window, type or paste in the link to your video.
  - ❗ Dozuki supports links from *YouTube*, *Vimeo*, *Youku*, and *Wistia* videos on wiki pages.
- Click on the **Insert Video** button to complete the embed.
- This generates the wiki syntax to insert the embed link on your page.
- Click on the **Save** button to view your new video embed on the page.

## Step 3 — Video Embed Example



- The video embeds display on the wiki as seen in this image.

## Step 4 — Add a Google Sheet Embed



- Open the *Google* spreadsheet and click **File**, in the upper-left corner of the page.
- Select **Share** in the drop-down menu.
- Select **Publish to web** in the drop-down menu.
- Select **Link**.
- Select **Entire Document** or select the **Sheet** that you want to embed.
- Click on the **Publish** button.
- **Copy** the link in the URL address bar.

## Step 5 — Google Sheet Embed Example

Table of Contents

☒ Show table of contents?

Additional Information

HBI

== Background ==

[embed|https://docs.google.com/spreadsheets/d/1BOdu7jn73s2YXNr8ybZ2PMYIW\_DKVCAzPMARQV7rp\_s/pubhtml]

=== Cracks ===

'''Issue: XT058 Cracks'''

\* On 5/1/2011 4 nEw3 MA07435A023 hybrids failed FF Test and were found to have cracks on the C10/C11 XT058 Tantalum cap.

\* On 5/1/2011 there were also 2 hybrid scrapped for damage on the C31/C35 XT058 Tantalum Cap

\* Investigation of issue found that there was one XT058 lot affected.

\*\* 2LVCD

Quality Alert - X1058 Crack Issue

2.15.2015

Contents

Background

Cracks

Disposition

Inspection Process

Background

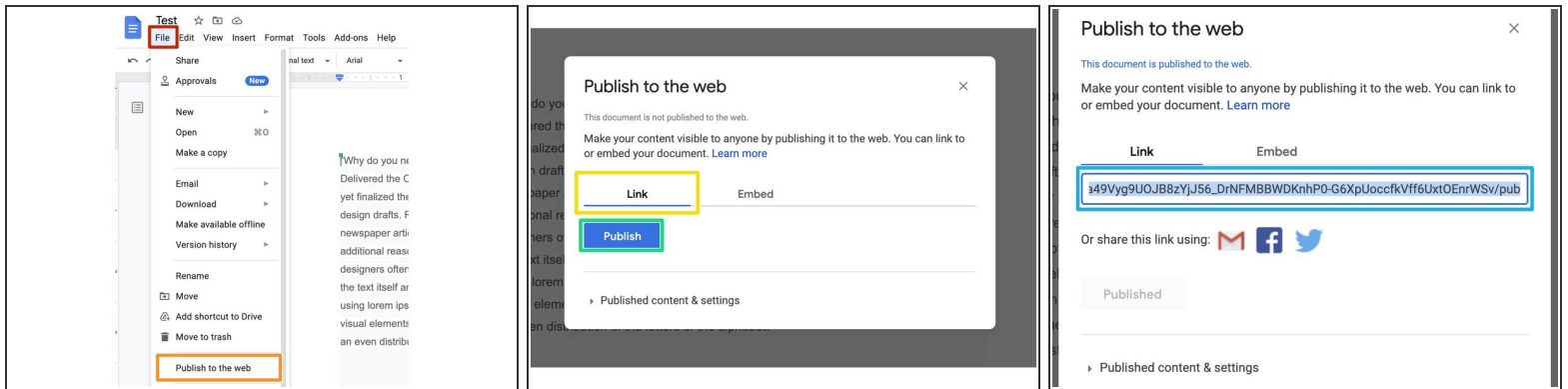
Workshop Tools : Sheet1

Tool	Notes	Tool #	Approxin
Important Tools:			
Bottom Bracket Tool		BBT-9	
Fourth Hand Brake Tool		BT-2	
Chain Wear Indicator		CC-3.2	
Universal Crank Puller		CWP-7	
Professional Chain Tool	chain breaker	CT-3	
Double Ended Cone Wrench 13/14		DCW-1	
Double Ended Cone Wrench 15/16		DCW-2	
Double Ended Cone Wrench 17/18		DCW-3	

Published by Google Sheets - Report Abuse - Updated automatically every 5 minutes

- Insert the following code where you are inserting the embed:
  - ⓘ **[embed|<paste link here>]**
- Click **Save** and view the page to see the embed.
- ⓘ Here is a [Live Example of a Google Sheets Embed](#).

## Step 6 — Add a Google Doc Embed



- Open the *Google* document and click **File**.
- Select **Publish to the web** from the drop-down menu.
- Select **Link** to generate the embed link.
- Click on the **Publish** button.
- **Copy** the link in the URL address bar.

## Step 7 — Google Doc Embed Example

Table of Contents

☒ Show table of contents?

Additional Information

H B I

== Background ==

[embed|https://docs.google.com/document/d/1c1FvEFM9bl0t-P0zrf98KVYQ6upN90Sxs6ewF77B-oY/pub]

=== Cracks ===

'''Issue: XT058 Cracks'''

\* On 5/1/2011 4 nEw3 MA07435A023 hybrids failed FF Test and were found to have cracks on the C10/C11 XT058 Tantalum cap.

\* On 5/1/2011 there were also 2 hybrid scrapped for damage on the C31/C35 XT058 Tantalum Cap

Delete Wiki

Preview

Save

Quality Alert - X1058 Crack Issue

2.15.2015

Contents

Background

Cracks

Disposition

Inspection Process

Background

Edit

DRTR FAQs

Q. How does DRTR impact licensed software vendors?

A. There is no impact. All licenses remain as they have been.

Q. What about software (IP) that is not separately licensed?

A. Clear contracts identifying all IP, with or without a license, are essential to both buyers and sellers so that both understand their rights and responsibilities. If there are any elements of the product which are to be treated as IP, and fall under Copyright Law, they should be identified prior to purchase.

Q. How does the spare parts requirement impact

- Insert the following code where you are inserting the embed:
  - ⓘ **[embed|<paste link here>]**
- Click on the **Save** button and view the page to see the embed.
- ⓘ Here is a [Live Example of a Google Docs Embed](#).

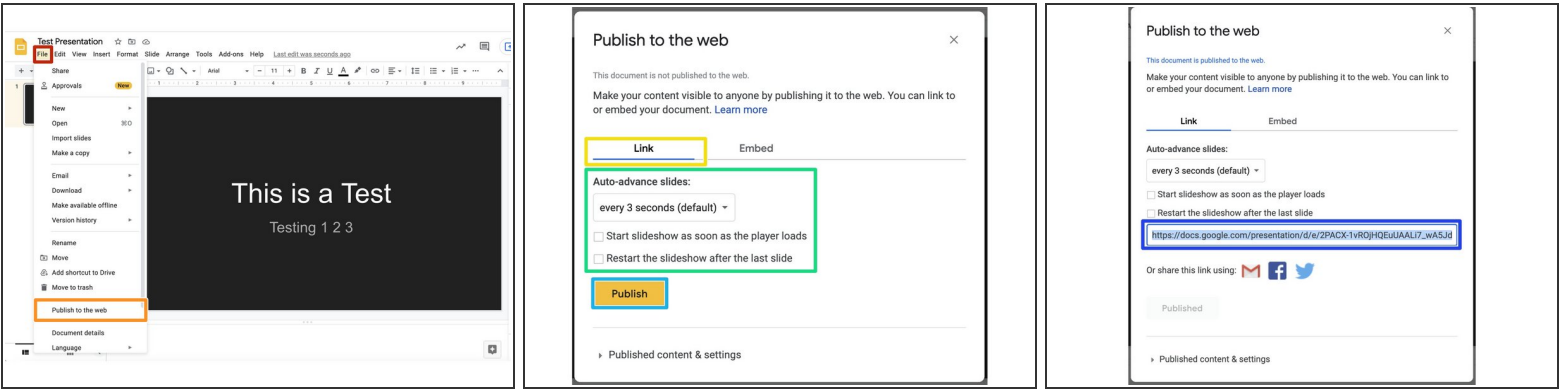
This document was generated on 2024-03-18 06:26:29 AM (MST).

© 2024help.dozuki.com/

Page 8 of 14



Step 8 — Add a Google Slides Embed






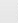


- Open the *Google* slides presentation and click **File**.
- Select **Publish to the Web** from the drop-down menu.
- Select **Link**.
- Set Auto-advance and starting options.
- Click on the **Publish** button to generate the link.
- **Copy** the link in the URL address bar.

## Step 9 — Google Slides Embed Example

Table of Contents

☒ Show table of contents?

Additional Information

H B I      

== Background ==

[embed|https://docs.google.com/presentation/d/1aRwQJp14JT5grd2TsGrflqIBbYKdyf2O57-EhxytXq8/pub?start=false&loop=false&delayms=3000]

=== Cracks ===

'''Issue: XT058 Cracks'''

\* On 5/1/2011 4 nEw3 MA07435A023 hybrids failed FF Test and were found to have cracks on the C10/C11 XT058 Tantalum cap.

\* On 5/1/2011 there were also 2 hybrid scrapped for damage on the C31/C35 XT058 Tantalum Cap

Delete Wiki

Preview

Save

Quality Alert - X1058 Crack Issue

2.15.2015

Contents

Background

Cracks

Disposition

Inspection Process

Background

This is a Test

...

Testing... 1 2 3

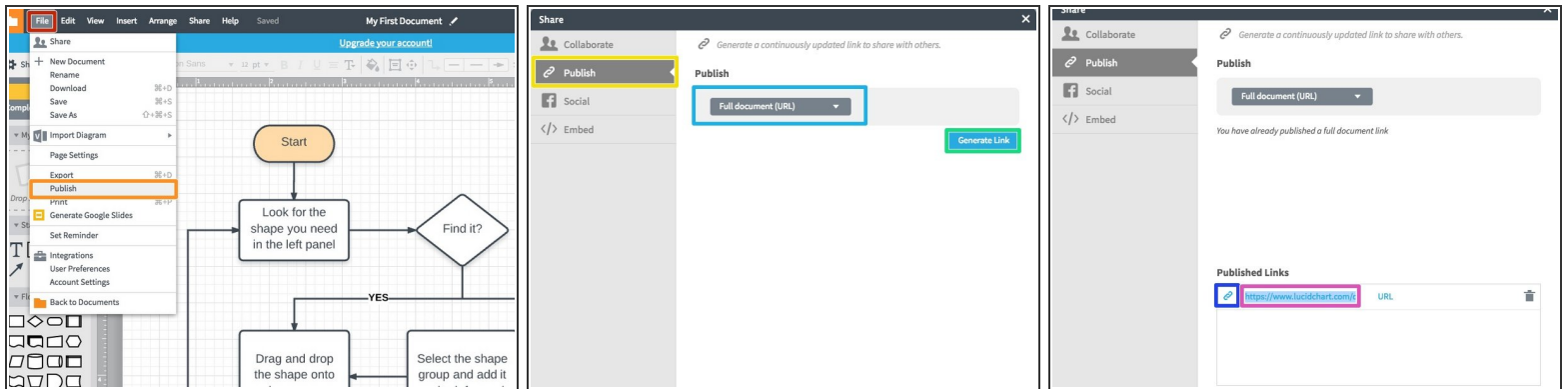
- Insert the following code where you are inserting the embed:
  - ❗ **[embed|<paste link here>]**
- Click on the **Save** button and view the page to see the embed.
- 🔖 Here is a [Live Example of a Google Slides Embed](#).
- 🔖 For all *Google* embeds, make sure the share settings are set to **Everyone with the link can view**.

This document was generated on 2024-03-18 06:26:29 AM (MST).

© 2024help.dozuki.com/

Page 10 of 14

## Step 10 — Add a Lucid Chart Link Embed



- Open the *LucidChart* document and click **File**.
- Select **Publish** from the drop-down menu.
- Select the **Publish** option from the menu on the left.
- Select the **document display** option.
- Click on the **Generate** button to generate the link.
- Click on the **Link** icon to show the full URL to copy.
- **Copy** the link.

Step 11 — LucidChart Embed Example

Table of Contents

☒ Show table of contents?

Additional Information

H B I [list icon] [list icon] [link icon] [video icon] [image icon] [help icon]

== Background ==

[embed|https://www.lucidchart.com/documents/view/5bb5535f-5b5a-4d5c-8c0b-ffc50ecabd63]

=== Cracks ===

'''Issue: XT058 Cracks'''

\* On 5/1/2011 4 nEw3 MA07435A023 hybrids failed FF Test and were found to have cracks on the C10/C11 XT058 Tantalum cap.

\* On 5/1/2011 there were also 2 hybrid scrapped for damage on the C31/C35 XT058 Tantalum Cap

Delete Wiki

Preview Save

Quality Alert - X1058 Crack Issue

2.15.2015

Contents

Background

Cracks

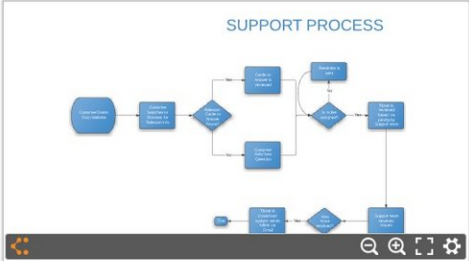
Disposition

Inspection Process

Background

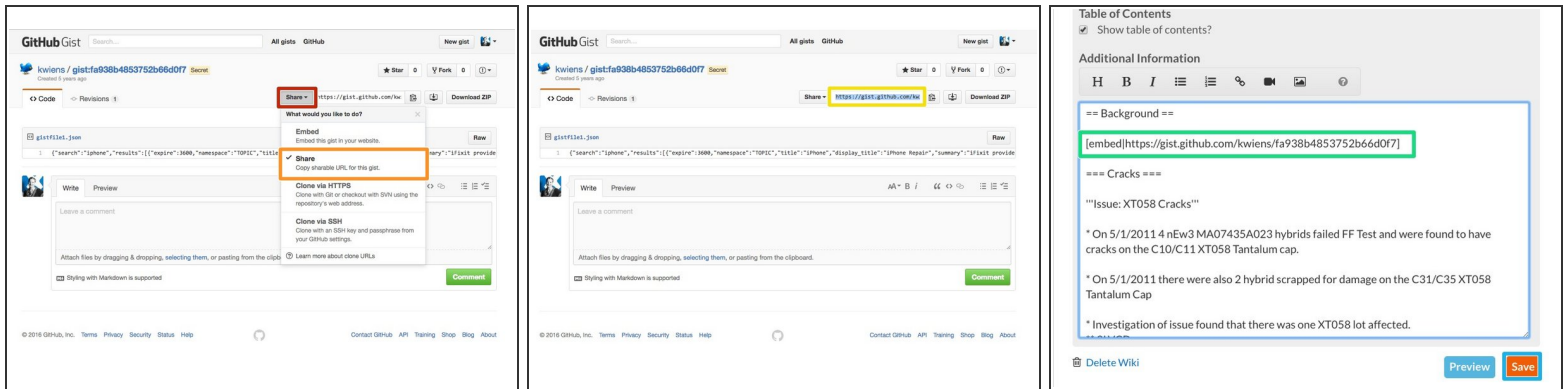
Edit

SUPPORT PROCESS



- Insert the following code where you are inserting the embed:
  - ⓘ **[embed|<paste link here>]**
- View the page to see the *LucidChart* embed.
- ⓘ Here is a [Live Example of a LucidChart Embed](#).

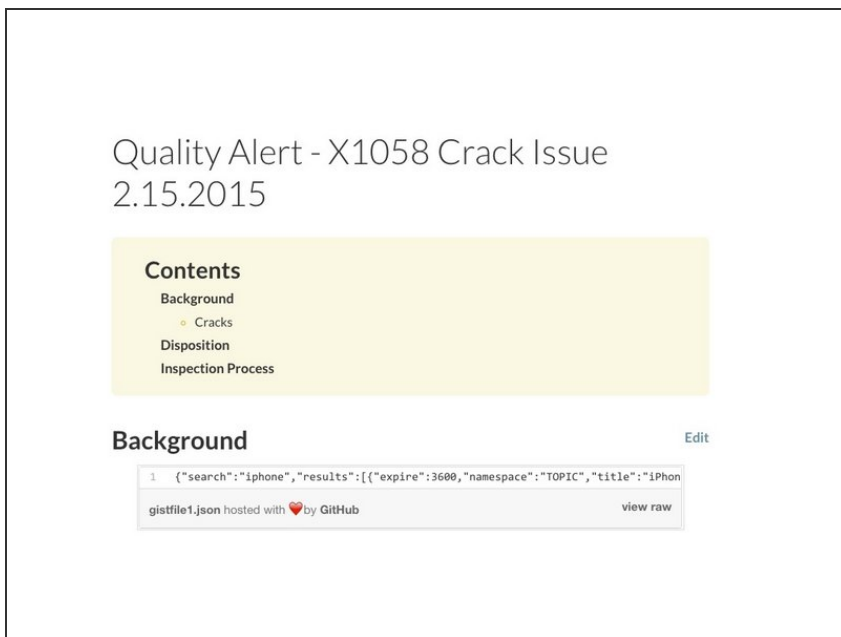
## Step 12 — Add a Gist Embed



The first screenshot shows the GitHub Gist interface for a gist named 'gistfile1.json'. A red box highlights the 'Share' button in the top right corner. A dropdown menu is open, showing options: 'Embed' (with a sub-option 'Embed this gist in your website'), 'Share' (highlighted with a red box), 'Clone via HTTPS', 'Clone via SSH', and 'Download ZIP'. The second screenshot shows the same gist page, but the 'Share' button is now highlighted with a yellow box, and the generated embed link is visible in the 'Share' dropdown. The third screenshot shows a Wiki page titled 'Quality Alert - X1058 Crack Issue' with a table of contents. The 'Background' section is expanded, showing the embed code: `[embed]https://gist.github.com/kwiens/fa938b4853752b66d0f7`. The 'Cracks' section is also expanded, showing the issue details.

- Open the *Gist* page and click **Share**.
- Select **Share** from the drop-down menu to generate the embed link.
- **Copy** link.
- Insert the following code where you are inserting the embed:  
`[embed]<paste link here>`
- Click on the **Save** button.

## Step 13 — Gist Embed Example



The screenshot shows a Wiki page titled 'Quality Alert - X1058 Crack Issue' with a date of '2.15.2015'. The page has a table of contents with sections: 'Contents', 'Background', 'Cracks', 'Disposition', and 'Inspection Process'. The 'Background' section is expanded, showing the embed code: `[embed]https://gist.github.com/kwiens/fa938b4853752b66d0f7`. The 'Cracks' section is also expanded, showing the issue details.

- **View the page** to see the *Gist* embed.
- ✳ Here is a [Live Example of a Gist Embed](#).

