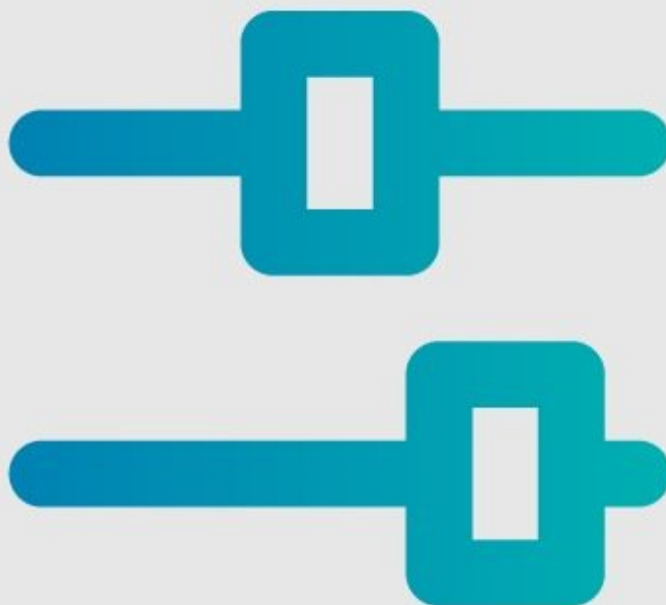




How to Enable Data Capture/Operator View

This guide demonstrates how to enable Data Capture and Operator View on a guide.

Written By: Dozuki System



INTRODUCTION

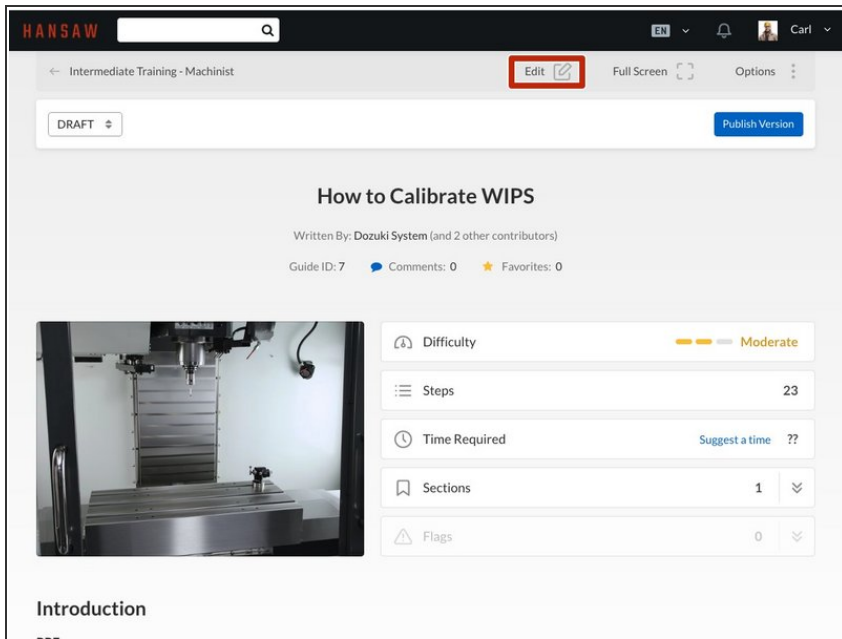
This guide demonstrates how to enable Data Capture and Operator View on a guide.

Reminders

Operator View is an element of the Data Capture feature in Dozuki Guides, so it is not accessible until Data Capture is enabled.

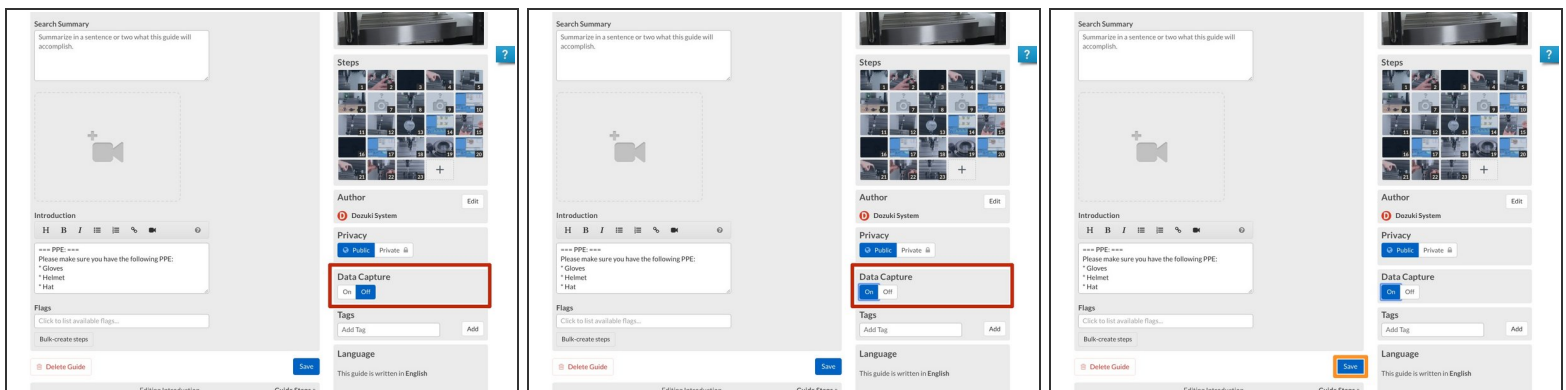
Any changes made to a guide, with the exception of tags and the default language, will create a new draft of the guide.

Step 1 — Open Guide Edit Page



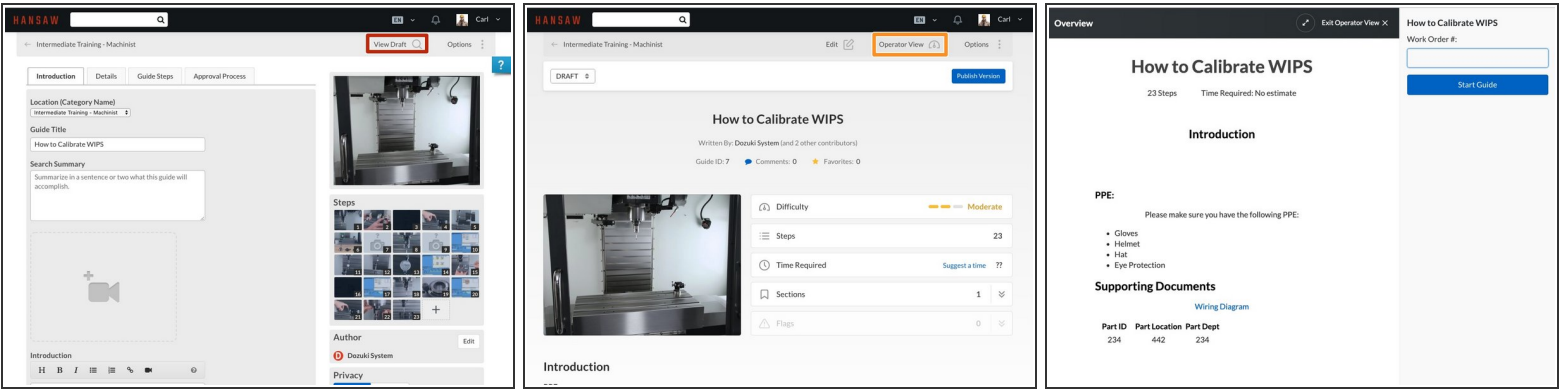
- Click on the **Edit** button at the top-right of the guide page, just beneath the site header.

Step 2 — Select Data Capture



- Scroll down and toggle the Data Capture to **On**.
 - ☑ Operator View is an element of the Data Capture feature in Dozuki Guides, so it is not accessible until Data Capture is enabled.
- Click on the **Save** button.
 - ℹ Refreshing the page after saving will reveal the Data Capture fields underneath each step.

Step 3 — Accessing Operator View



- To access the guide in Operator View:
 - Click **View Draft** from the top-right of the guide.
 - **Operator View** will now display at the top of the guide screen.
 - Select **Operator View**.