



How to Set Up Custom Domain Aliasing

This guide demonstrates how to set up custom domain aliasing on your Dozuki site.

Written By: Dozuki System



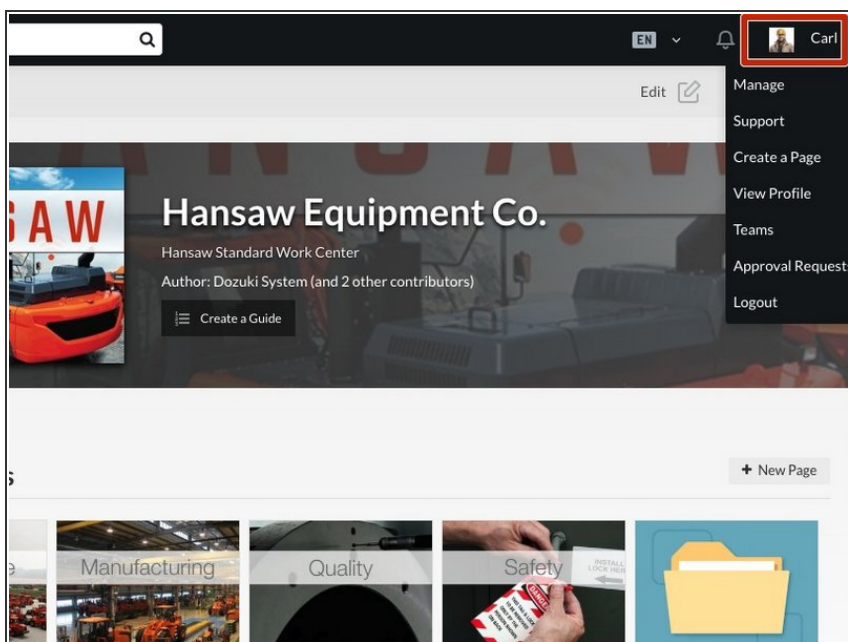
INTRODUCTION

This guide demonstrates how to set up custom domain aliasing on your Dozuki site.

Domain Aliasing

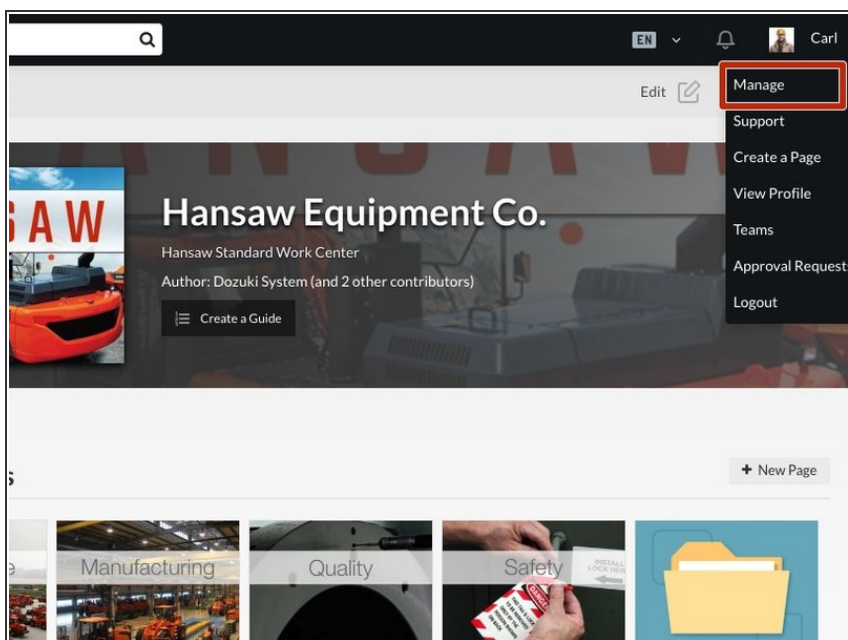
Domain Aliasing allows you to assign more than one domain name to one web site. You can have up to three domains pointing at your Dozuki site.

Step 1 — Enable Custom Domain Aliasing



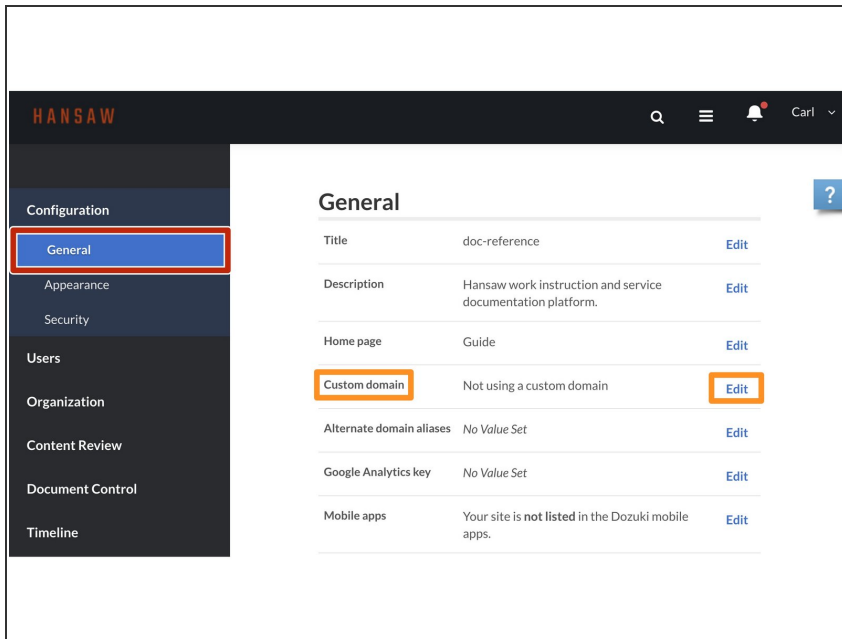
- Click on the user menu on the right side of the site header to reveal a drop-down menu.

Step 2



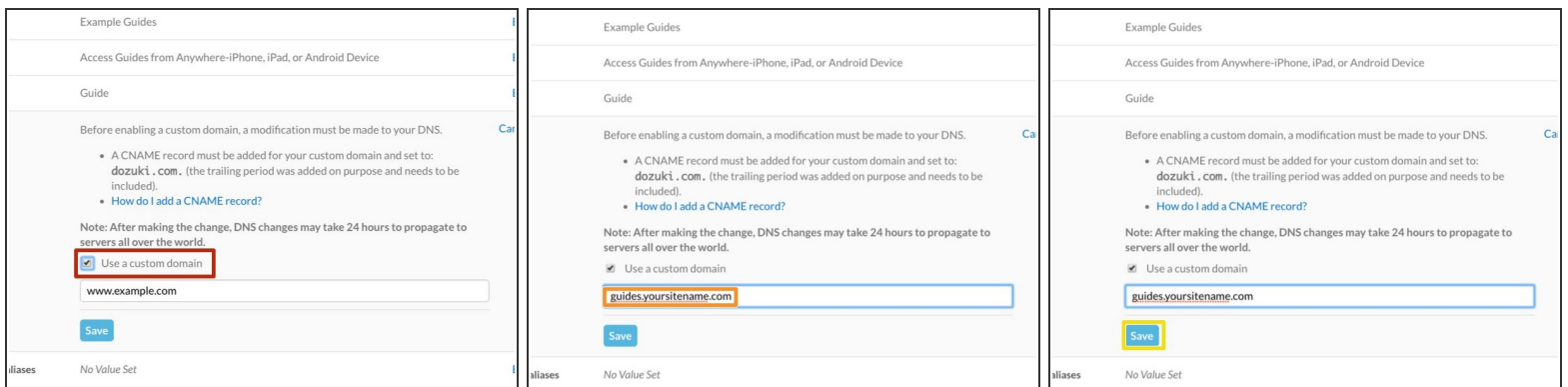
- Select **Manage** from the drop-down menu.

Step 3



- Under **Configuration**, select the **General** sub-section.
- In the **Custom Domain** section, select **Edit**.

Step 4



- Click and check the box next for **Use a Custom Domain**.
- [Add a CNAME record](#) or enter the URL that you want to use if you have already added a CNAME record.
 - ❗ *Some examples include: [guides.yoursitename.com](#) or [support.yoursitename.com](#).*
- Click **Save**.

Step 5 — Add a CNAME Record

The first screenshot shows the 'Simple DNS Zone Editor' interface with the 'Domain' field set to 'example.com' and a red box highlighting it. The second screenshot shows the 'Name' field set to 'guides.example.com.' with a green checkmark. The third screenshot shows the 'CNAME' field set to 'example.dozuki.com' with a green checkmark and a yellow arrow pointing to the 'Add CNAME Record' button.

⚠ This process varies depending on your hosting services provider.

📘 **NOTE:** You need to login to your hosting services account portal to add a CNAME. This change cannot be completed from your Dozuki site.

- Select the Domain for which you want to create a new CNAME Record.
- Enter the custom URL that you want to use for your Dozuki site in the **Name** field. This is the same URL that you entered in the custom domain box on your Dozuki site.
 - 📘 You may need to include a **Period** at the end of your custom URL. For example, we entered `guides.example.com`. Notice the period at the end of the URL.
- The final step is to enter your Dozuki site URL. This is the URL you created when you first signed up for Dozuki. Our Dozuki URL is `example.Dozuki.com`
- Click **Add CNAME Record**
- Now wait. After making the change, DNS changes may take 24 hours to propagate to servers all over the world. However, the change usually takes effect in less than an hour.